

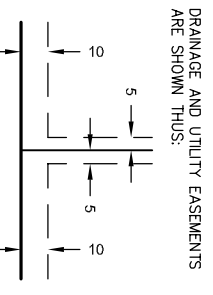
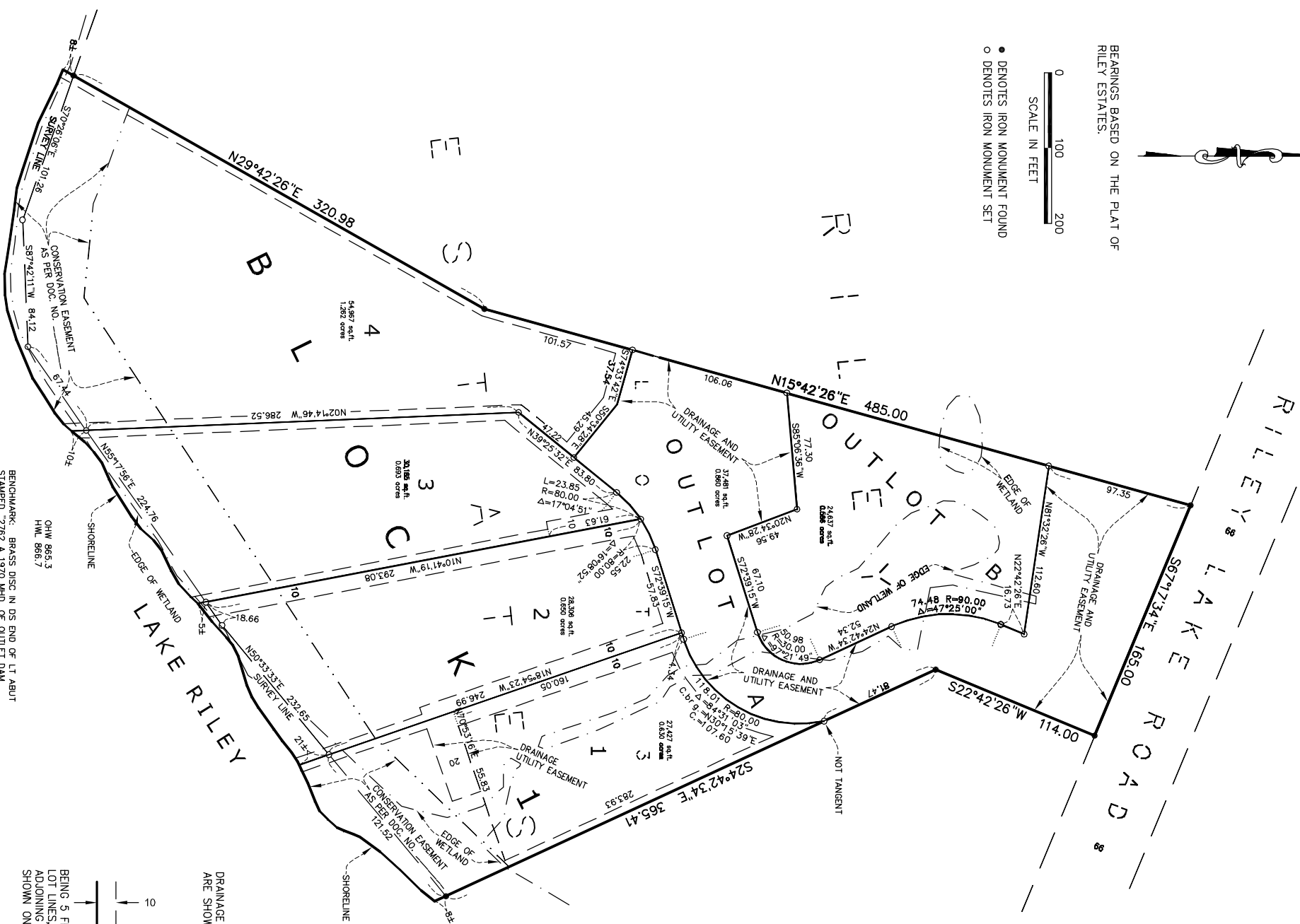
# THE POINTE ON LAKE RILEY



BEARINGS BASED ON THE PLAT OF RILEY ESTATES.



- DENOTES IRON MONUMENT FOUND
- DENOTES IRON MONUMENT SET



BEING 5 FEET IN WIDTH AND ADJOINING LOT LINES, AND 10 FEET IN WIDTH AND ADJOINING RIGHT OF WAY LINES AS SHOWN ON THIS PLAT.

KNOW ALL BY THESE PRESENTS, That G&L Land Investment, LLC, a Minnesota limited liability company, owners and proprietors, and Lakeland Construction Finance, LLC, a Minnesota limited liability company, mortgagee of the following described property situated in the County of Hennepin, State of Minnesota, to wit:  
 Lot 3, Block 1, RILEY ESTATES, Hennepin County, Minnesota  
 Has caused the same to be surveyed and platted as THE POINTE ON LAKE RILEY, and do hereby dedicate to the public for public use forever the drainage and utility easements as shown on this plat.

In witness whereof said G&L Land Investment, LLC has caused these presents to be signed by its proper officer this \_\_\_\_ day of \_\_\_\_\_, 2005  
 G&L LAND INVESTMENT, LLC

by Timothy J. Gullfoll, Chief Financial Manager

In witness whereof said Lakeland Construction Finance, LLC has caused these presents to be signed by its proper officer this \_\_\_\_ day of \_\_\_\_\_, 2005.

LAKELAND CONSTRUCTION FINANCE, LLC

by xxxxxx

STATE OF MINNESOTA  
 COUNTY OF \_\_\_\_\_

The foregoing instrument was acknowledged before me this \_\_\_\_ day of \_\_\_\_\_, 2005, by Timothy J. Gullfoll, Chief Financial Manager of G&L Land Investment, LLC, a Minnesota limited liability company, on behalf of the company.

Notary Public, \_\_\_\_\_ County, Minnesota  
 My Commission Expires \_\_\_\_\_

STATE OF MINNESOTA  
 COUNTY OF \_\_\_\_\_

The foregoing instrument was acknowledged before me this \_\_\_\_ day of \_\_\_\_\_, 2005, by xxxxxxxx, xxxxxx for Lakeland Construction Finance, LLC.

Notary Public, \_\_\_\_\_ County, Minnesota  
 My Commission Expires \_\_\_\_\_

I hereby certify that I have surveyed and platted the property described on this plat as THE POINTE ON LAKE RILEY; that this plat is a correct representation of the survey; that all distances are correctly shown on the plat in feet and hundredths of a foot that all monuments have been correctly placed in the ground as shown; that the outside boundary lines are correctly designated on the plat; and that there are no wetlands as defined in MS 505.02, Subd. 1 or public highways to be designated on the plat.

Robert L. Peters, Land Surveyor  
 Minnesota License Number 14890

STATE OF MINNESOTA  
 COUNTY OF \_\_\_\_\_

The foregoing Surveyor's Certificate was acknowledged before me this \_\_\_\_ day of \_\_\_\_\_, 2005, by Robert L. Peters, Licensed Land Surveyor.

Notary Public, \_\_\_\_\_ County, Minnesota  
 My Commission Expires \_\_\_\_\_

EDEN PRAIRIE, MINNESOTA  
 This plat of THE POINTE ON LAKE RILEY was approved and accepted by the City Council of Eden Prairie, Minnesota, at a regular meeting thereof held this \_\_\_\_ day of \_\_\_\_\_, 2005.

CITY COUNCIL OF EDEN PRAIRIE, MINNESOTA  
 By \_\_\_\_\_ Mayor  
 \_\_\_\_\_ Manager or Clerk

TAXPAYER SERVICES DEPARTMENT, Hennepin County, Minnesota  
 I hereby certify that taxes payable in 2005 and prior years have been paid for land described on this plat. Dated this \_\_\_\_ day of \_\_\_\_\_, 2005.

Patrick H. O'Connor, County Auditor  
 by \_\_\_\_\_ Deputy

SURVEY DIVISION, Hennepin County, Minnesota  
 Pursuant to MINN. STAT. Sec. 383B 965 (1989), this plat has been approved this \_\_\_\_ day of \_\_\_\_\_, 2005.

\_\_\_\_\_, County Surveyor  
 by \_\_\_\_\_ Deputy

COUNTY RECORDER, Hennepin County, Minnesota  
 I hereby certify that the within plat of THE POINTE ON LAKE RILEY was filed for record in this office this \_\_\_\_ day of \_\_\_\_\_, 2005, at \_\_\_\_\_ o'clock \_\_\_\_ m.

Michael H. Curmill, County Recorder  
 by \_\_\_\_\_ Deputy